



Save up to 80%* of your hot water energy costs... rain, hail or shine!



SANDEN. Leading hot water technology

Enjoy the higher STC rewards even before you turn a hot water tap on.

The new Sanden Eco® Plus system is the most energy efficient hot water heat pump currently available on the market. As such, when you buy a Sanden system, you receive the highest amount of Small-scale Technology Certificates (STCs) of any currently available hot water heat pump system. These STCs can be used to discount your purchase price. For more information, ask your local Sanden Dealer or visit www.climatechange.gov.au or www.cleanenergyregulator.gov.au

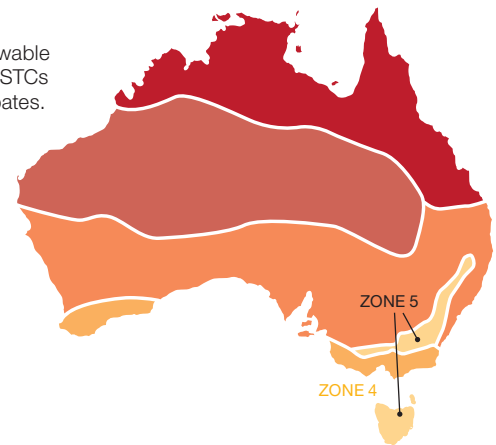


STC Rebate Zones

A Small-scale Technology Certificate (STC) is the equivalent of one megawatt hour of renewable energy generation. The new Sanden Eco® Plus Hot Water Heat Pump System attracts the STCs below, which can be traded for a cash rebate. Eligible households can also claim State rebates.

| Model | STC Zone | | | | |
|--------------|----------|----|----|----|----|
| | 1 | 2 | 3 | 4 | 5 |
| GAUS-160FQS* | 23 | 23 | 27 | 30 | 29 |
| GAUS-250FQS* | 23 | 22 | 27 | 30 | 28 |
| GAUS-300FQS* | 23 | 22 | 28 | 30 | 28 |
| GAUS-315FQS* | 23 | 22 | 28 | 30 | 28 |
| GAUS-315FQV* | 23 | 22 | 28 | 30 | 27 |

* Refer to back page for technical specifications | Notes: This table details the number of STCs registered by The Clean Energy Regulator (CER) for the Sanden Eco® Plus Hot Water Heat Pump System. STC values are subject to change without notice and are correct at time of printing. STC calculations are based on continuous tariff. A Sanden Eco® Plus Hot Water Heat Pump System consists of 1 x Heat Pump and 1 x Tank.



Sanden. Striving to develop 'Environmentally Advanced' Products.

Sanden is a Japanese owned global business, which has earned a solid reputation as a leader in the field of heating and cooling technology. Our focus is to improve the living standards of all Australians, via the development of environmentally advanced products. Sanden has been operating in Australia for over 35 years.



| | |
|-----------------------------|--|
| Established: | July 30, 1943 |
| Paid Up Capital: | AUD 122.6 million† AUD1 = JPY90 |
| Sanden Companies: | 30 (In Japan), 54 (Overseas) |
| Number Of Employees: | 4328 (In Japan), 8215 (Overseas) |
| Net Sales: | AUD 3,410.9 million† AUD1 = JPY90 |

Sanden has 2 core businesses:

1. Automotive Air Conditioning Systems

Sanden has more than 50 years experience in the production and global supply of air conditioning compressors. It currently supplies some of the world's leading automotive brands, including VW, Honda, Ford, Audi, Rolls Royce, Peugeot, Citroen, Renault, Landrover, Fiat, Mercedes Benz & Kenworth.

2. Household Living & Environment Systems

Sanden has applied its advanced understanding of heat transfer technologies to the home environment, resulting in the development of the highly innovative and superior Sanden Eco® Plus Hot Water Heat Pump system, which is manufactured in Japan.

Why consider an Air-Sourced Hot Water Heat Pump System?

An air-sourced heat pump absorbs heat from the air and transfers it to heat water. It runs on electricity but is roughly three times more efficient than a conventional electric water heater. It is designed to save energy and money and reduce greenhouse gas emissions.

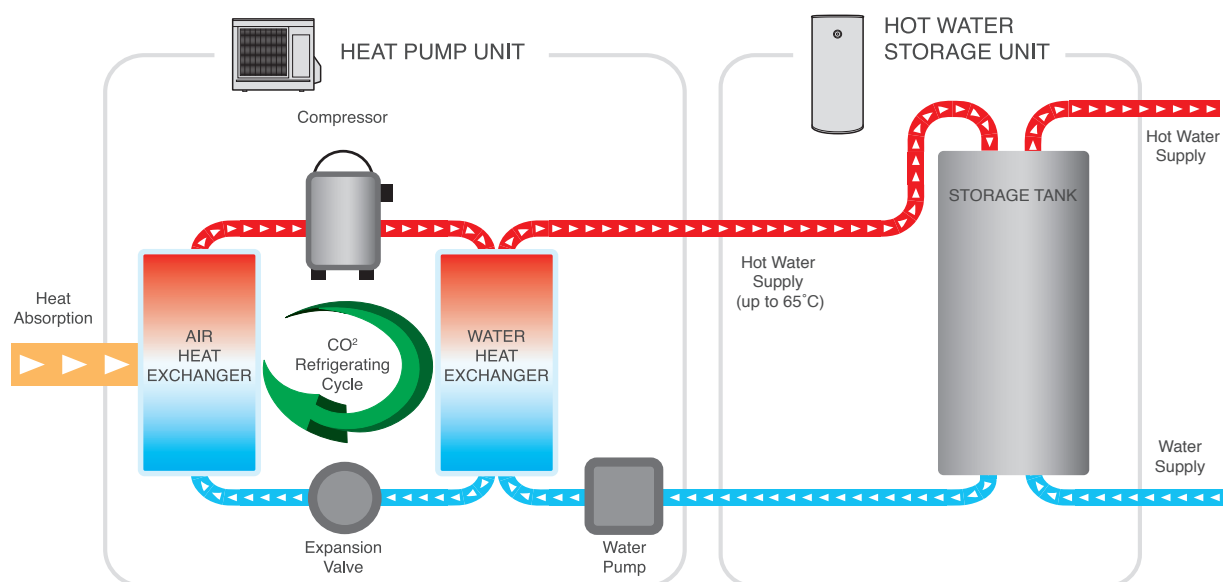
Why purchase a Sanden Eco[®] Plus Hot Water Heat Pump System?

The superior design of a Sanden Eco[®] Plus Hot Water Heat Pump ensures:

- Industry leading energy efficiency using only 20% of the energy required by an electric storage hot water system.
- Innovative technology - up to 50% faster heat recovery than currently available Hot Water Heat Pumps.
- Perfect to use with Off-Peak Electricity (except in cold climate areas, where continuous electricity is recommended), for even more savings.
- The most STC rewards for energy efficiency, means you enjoy a greater discount on the purchase price.
- Class leading warranties, backed by Sanden's 35 years of operation in Australia.
- Split system for ease of installation and near silent operation.

How a Sanden Eco[®] Plus System Works.

The Sanden Eco[®] Plus Hot Water Heat Pump System uses a small amount of energy to move heat from one location to another. Heat is absorbed by ozone-friendly R744 (CO₂), a natural refrigerant which does not contribute to global warming. As the warm gaseous refrigerant circulates through the system it passes through the compressor, and its pressure and temperature rises. The hot refrigerant then passes through a heat exchanger which heats the water. The refrigerant is cycled back into the system, and hot water is pumped to the storage tank.



Superior Features and Benefits.

Unlike other hot water heat pump systems, the Sanden Eco® Plus system uses a smarter split system where the heat pump unit and stainless steel tank are installed separately. This allows easy on-site handling and installation, as well as flexibility of the storage tank location, which can be up to 15 metres distance horizontally or 5 metres vertically from the heat pump unit.

Heat Pump Unit

- A high Coefficient of Performance (COP=5⁺) results in significantly reduced energy use and CO² emissions.
- Up to 50% faster heat recovery than typical heat pumps.
- Uses unique Ozone friendly R744 (CO²) refrigerant.
- Simple installation by Plumber & Electrician, with no Refrigeration Mechanic required.
- An automatic heating cycle, which makes it perfect for use with power generated by on roof photo voltaic (PV) solar electricity systems.
- Uniquely designed to operate in all climates (ie. -10°C to +43°C operating range). **NOTE: In cold climate regions, the Heat Pump unit will run during the night, when the ambient temperature drops below 3°C. If used in an Off Grid system, please ensure that adequate power is available.**
- Includes Blockout Timer, to eliminate high electricity tariff periods.
- No backup element required.
- Whisper quiet operation, with industry leading noise level of 37 dB - very neighbour friendly!
- High quality, Japanese made weather resistant construction for outdoor location.
- 6 year Warranty (including parts and labour).

Stainless Steel Tank

- 4 x tank sizes offered – 160L, 250L, 300L and 315L.
- High quality, Australian made extra long life 316 Marine Grade stainless steel cylinder.
- Fully insulated for minimal heat loss.
- Mains pressure rated.
- Safety pressure and temperature relief valve supplied.
- 15 year Pro Rata Warranty (including parts and labour).



Years of worry free hot water – we guarantee it

Every Sanden Eco® Plus Hot Water Heat Pump System is fully backed by our extended warranties. Sanden Eco® Plus Hot Water Heat Pump units feature a 6 year class leading warranty, while the stainless steel storage tank also has a class leading 15 year warranty, providing you with peace of mind.

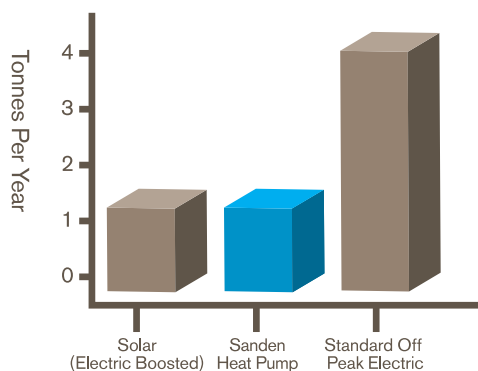
For full warranty conditions, please refer to www.sanden-hot-water.com.au

The Sanden warranty applies alongside, and in addition to, any rights or remedies to which you may be entitled under the Australian Consumer Law.

How Sanden delivers better Performance and Savings.

Sanden employs superior R744 (CO²) refrigerant technology, so that the amount of electrical energy required to heat the water is significantly less than that required by a conventional electric storage hot water system. In fact, the Sanden Eco[®] Plus Hot Water Heat Pump System consumes 1kW of electricity to generate 4.5kW of heat (COP = 5[^]), which equates to 20% of the energy used by a conventional electric storage system. Consequently, with the Sanden Eco[®] Hot Water Heat Pump System, you can save up to 80% of your conventional electric storage hot water energy costs!

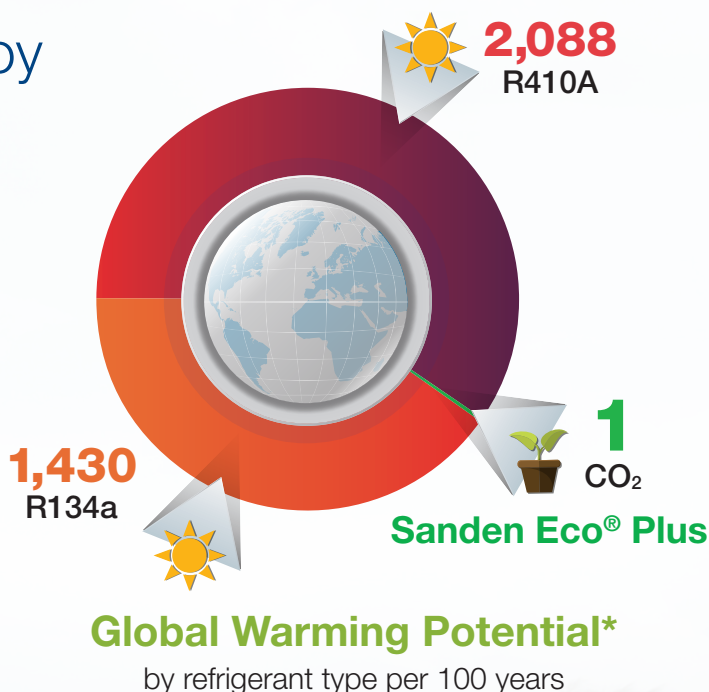
Greenhouse CO² Emissions from Hot Water Systems



Source: Department of Environment & Climate Change NSW

Eco-Friendly - Why employ R744 (CO²) refrigerant?

- It offers no ozone layer depletion and minimal global warming (i.e. as per table below) versus other commonly used refrigerants, should the system leak.
- It performs higher compression efficiency, with lower energy consumption, thereby allowing more heat to be transferred to the water, for less energy used (i.e. excellent thermodynamic ability).
- The refrigerant temperature gets very hot, very quickly, so water temperature of 63°C, is achieved almost instantly from the Heat Pump unit.
- Sanden is the only currently available HWHP in Australia, to employ “ozone friendly” R744 (CO₂) refrigerant.



*Global warming potential (GWP) is a measure of how much a given mass of greenhouse gas is estimated to contribute to global warming. It is a relative scale which compares the gas in question to that of the same mass of carbon dioxide (whose GWP is by convention equal to 1). A GWP is calculated over a specific time interval and this time interval must be stated whenever a GWP is quoted or else the value is meaningless.

| Refrigerant ASHRAE Number | IUPAC Chemical Name | Net GWP per 100 years |
|---------------------------|----------------------------|-----------------------|
| R744 | Carbon Dioxide | 1 |
| R12 | Dichlorodifluoromethane | 10,900 |
| R22 | Chlorodifluoromethane | 1,810 |
| R134a | 1,1,1,2-Tetrafluoromethane | 1,430 |
| R410a | R32/R125 (50/50) | 2,087.5 |

See also:

http://en.wikipedia.org/wiki/Global_warming_potential
http://en.wikipedia.org/wiki/List_of_refrigerants



Whisper Quiet Operation.

When purchasing a hot water heat pump system, noise levels are an important consideration.

Sanden's extensive research has delivered a 'whisper quiet' operating noise level (37dB) that ensures both you and your neighbours' lifestyles remain unaffected by its operation.



Source
www.noisehelp.com

| dB | EXAMPLE | APPLIANCES |
|-----|---------------------------|------------------|
| 0 | healthy hearing threshold | |
| 10 | a pin dropping | |
| 20 | rustling leaves | |
| 30 | whisper | SANDEN ECO® PLUS |
| 40 | babbling stream | computer |
| 50 | light traffic | refrigerator |
| 60 | conversational speech | air conditioner |
| 70 | shower | dishwasher |
| 80 | alarm clock | garbage disposal |
| 90 | squeeze toy | lawn mower |
| 100 | motorcycle (riding) | |
| 110 | rock band | |
| 120 | thunderclap | |
| 130 | peak stadium crowd noise | |
| 140 | jet engine at takeoff | |
| 150 | fighter jet launch | |
| 160 | shotgun | |
| 170 | safety airbag | |
| 180 | rocket launch | |

CASE STUDY

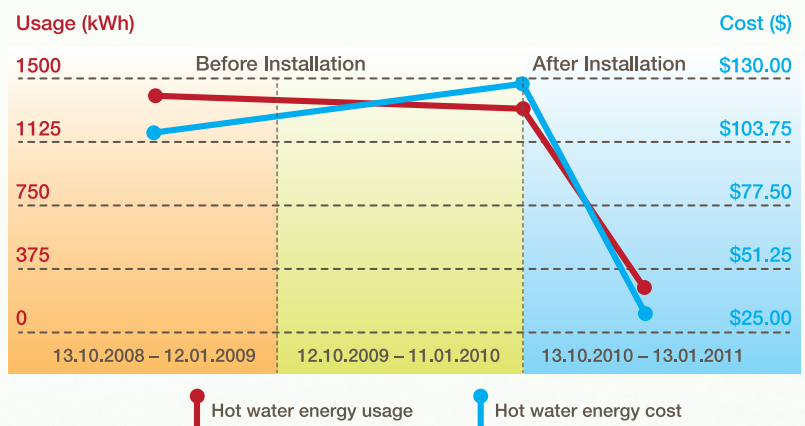
Cost savings achieved by a Sanden Eco® Hot Water Heat Pump System versus a conventional electric hot water system.

The table presents electricity consumption figures recorded by a Sanden customer, who replaced his conventional electric Rheem Hot Water System with a Sanden Eco® Hot Water Heat Pump System, on 4.10.10. He lives in the Sydney Metro area (i.e. STC Zone 3), has a family of 4 people (ie. Husband, Wife & 2 x Children) using hot water and uses Off-Peak Controlled Load 2.

As can be seen, the reduction in usage achieved for the 2010/11 period, versus prior year, was approx. 80%, while the reduction in \$ Cost for the same period was 77% and this was despite a change of supplier and a more expensive tariff (ie. increase of 18.7%).

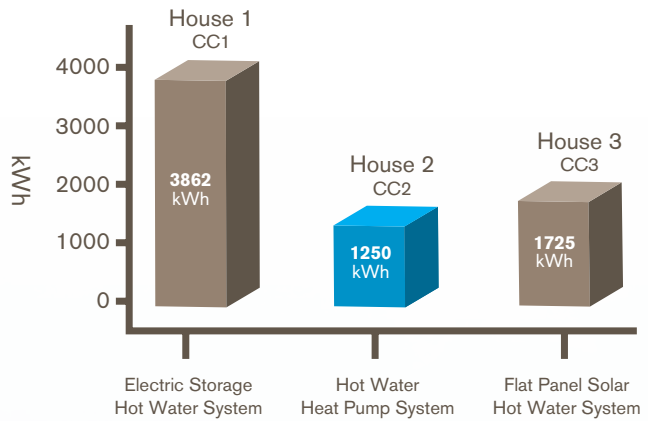


| From | To: | Days: | Rate (c/kWh) | Supplier | Usage (kWh) | Cost (\$) |
|----------|----------|-------|--------------|-------------|-------------|-----------|
| 13.10.08 | 12.01.09 | 91 | 7.89 | Integral | 1368 | 107.90 |
| 12.10.09 | 11.01.10 | 91 | 9.58 | Integral | 1347 | 129.08 |
| 13.10.10 | 13.01.11 | 93 | 11.37 | IntegralAGL | 265 | 30.12 |



Did you know that Heat Pump technology is more energy efficient than Solar?

Hot Water Systems Energy Usage Comparisons



During the period 2009 - 2013, the Campbell Creek Energy Efficient Home Project* compared the energy usage of three homes, each with different types of water heaters.

Test results for the period January to December 2012, confirmed that the Solar Flat Panel system used 38% more energy than the Hot Water Heat Pump.

- House 1 (CC1) - Electric, 50 gal capacity, EF=0.86, usage= 60 gal/day, set temp=120°F
- House 2 (CC2) - Hybrid Electric Heat Pump Water Heater, 50gal, EF =2.4, set temp = 120°F, usage=60 gal/day
- House 3 (CC3) - Solar Water Heater, 85 gal, EF =0.91, set temp = 120°F, 60 ft² collector area, electric pumps, usage=60 gal/day

*Source: <http://cchouse1.dyndns.org:83/dashboards/Campbell%20Creek%20Fact%20Sheet.pdf>

4 x Tank Sizes Available

The Sanden Eco® Plus Hot Water Heat Pump System is available with any one of 4 tank sizes - 160L, 250L, 300L and 315L. Each tank is combined with the Sanden Eco® Plus Heat Pump Unit, as listed below.



| Tank size/shape | No. of persons using hot water | Typical dwelling type | Suitable for Off-peak & Continuous tariffs? | STC rebates available? |
|-----------------|--------------------------------|-----------------------|---|------------------------|
| 160L | 2-4 | Units/Townhouses | Continuous only | Yes |
| 250L | 3-5 | Residential | Both | Yes |
| 300L | 4-6 | Residential | Both | Yes |
| 315L | 4-6 | Residential | Both | Yes |

IMPORTANT INFORMATION

Please Ensure Your Water Quality Is Within Specification.

Water supply quality

Chloride and pH

In high chloride water supply areas, the water can corrode some parts and cause them to fail. Where the chloride level exceeds 200 mg/litre warranty does not apply to the heat pump unit and tank unit. pH is a measure of whether the water is alkaline or acid.

In an acidic water supply, the water can attack the parts and cause them to fail. No warranty applies to the heat pump unit and tank unit where the pH is less than 6.5 or more than 8.5.

The water supply from a rainwater tank unit in a metropolitan area is likely to be corrosive due to the dissolution of atmospheric contaminants.

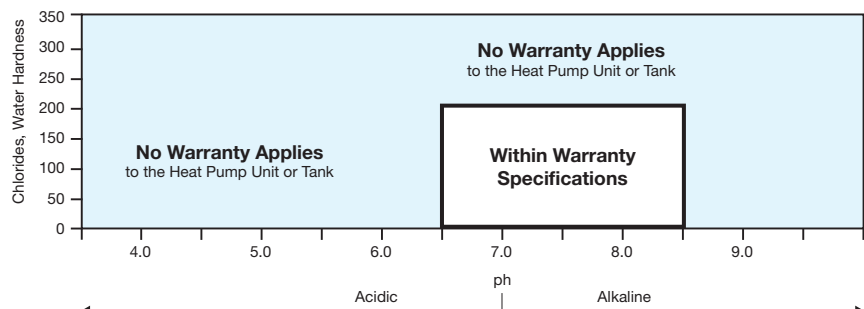
Water with a pH less than 6.5 may be treated to raise the pH. It is recommended that an analysis of the water from a rainwater tank be conducted before connecting this type of water supply to the system.

Change of water supply

Changing, or alternating, from one water supply to another can have a detrimental effect on the operation and/or life expectancy of the water tank unit cylinder, PTR valve, water heating circulation and the heat exchanger in the system. Where there is a changeover from

one water supply to another, for example, a rainwater tank supply, desalinated water supply, public reticulated water supply or water brought in from another supply, then water chemistry information should be sought from the supplier or the water should be tested to ensure it meets the requirements of our Sanden Eco® Plus Hot Water Heat Pump System warranties.

PH & Chlorides and Water Hardness



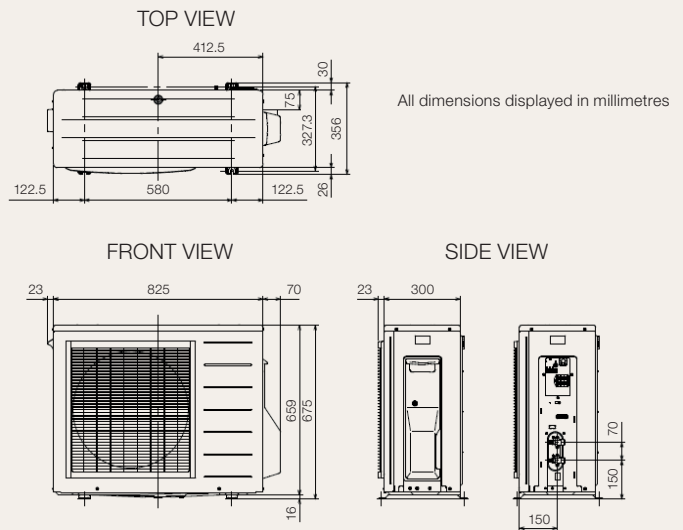
For a listing of Australian postcodes with published variable water quality, please refer to www.sanden-hot-water.com.au

Specifications

Please note: A Sanden Eco® Plus Hot Water Heat Pump System consists of 1 x Heat Pump and 1 x Tank (Refer to 'STC Rebate Zones' for System Model Numbers).

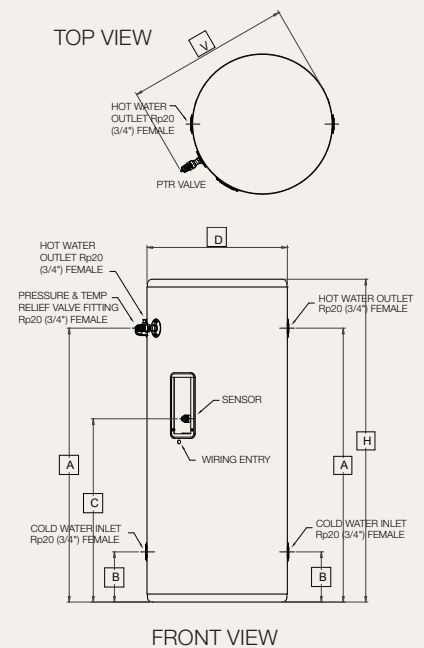
Heat Pump

| Item No. GAU-A45HPC | |
|--|--|
| Dimensions | |
| Weight | 48kg |
| Technical | |
| Heat Output (at 32.45 °C ambient / 18.74 °C cold water inlet) | 4.99kW |
| Electric Input (at 32.45 °C ambient / 18.74 °C cold water inlet) | 0.84kW |
| COP (at 32.45 °C ambient / 18.74 °C cold water inlet) | 5.96^ |
| Refrigerant | CO ² (R744) |
| Water Temperature Setting (Nominal) - from Heat Pump unit | 63 °C |
| Compressor | Scroll, with Inverter Control Technology |
| Electrical Supply | 240V/50Hz/Single Phase |
| Circuit | 20Amps |
| Operating Noise Level (measured 1m from Heat Pump unit) | 37dB |
| Ambient Air Operating Temperature | Minus 10 °C to Plus 42 °C |
| Maximum Operating Water Pressure | 850kPa |
| Maximum Heat Output | 6.0kW |
| Maximum Rated Power Input | 2.3kW |
| Water Connections & Settings | |
| Inlet | ½" BSP, 12.7 mm |
| Outlet | ½" BSP, 12.7 mm |
| Country of Manufacture | Japan |
| Warranty | 6 Years*** |



Storage Tank

| Item No. | SAN-160SAQA | SAN-250SAQA | SAN-300SAQA | SAN-315SAQA | SAN-315VE |
|--|-----------------------------------|-----------------------------------|-----------------------------------|-----------------------------------|----------------------------------|
| H Height | 970mm | 1428mm | 1891mm | 1748mm | 1626mm |
| A Hot Water Outlet & PTR Valve | 753mm | 1212mm | 1693mm | 1531mm | 1432mm |
| C Sensor Port | 249mm | 708mm | 1086mm | 1027mm | 1111mm |
| B Cold Water Inlet / Heat Pump Flow | 223mm | 222mm | 208mm | 221mm | 115mm |
| D Diameter | 621mm | 621mm | 580mm | 621mm | 638mm |
| Weight | 29kg | 45kg | 50kg | 55kg | 90kg |
| Storage Capacity | 160L | 250L | 300L | 315L | 315L |
| Inner Tank | Stainless Steel | Stainless Steel | Stainless Steel | Stainless Steel | Vitreous Enamel |
| Water Connections & Settings | | | | | |
| Tank Relief Valve Setting (PTR Valve) | 850(kPa) | 850(kPa) | 850(kPa) | 850(kPa) | 850(kPa) |
| Expansion Control Valve Setting (ECV) | 700(kPa) | 700(kPa) | 700(kPa) | 700(kPa) | 700(kPa) |
| Maximum Mains Pressure Settings | | | | | |
| With ECV | 500(kPa) | 500(kPa) | 500(kPa) | 500(kPa) | 500(kPa) |
| Inlet Water Operating Pressure | 500(kPa) | 500(kPa) | 500(kPa) | 500(kPa) | 500(kPa) |
| Adjustable Tempering Valve | 1400(kPa) | 1400(kPa) | 1400(kPa) | 1400(kPa) | 1400(kPa) |
| Hot and Cold Connection | Rp 20 (3/4") Female | Rp 20 (3/4") Female | Rp 20 (3/4") Female | Rp 20 (3/4") Female | Rp 20 (3/4") Female |
| Watermark Licence No. | WM-022333 | WM-022333 | WM-022333 | WM-022333 | WM-022333 |
| Colour | Surfmist & Ironstone Ends | Surfmist & Ironstone Ends | Surfmist & Ironstone Ends | Surfmist & Ironstone Ends | Surfmist & Ironstone Ends |
| Country of Manufacture | Australia | Australia | Australia | Australia | Australia |
| Warranty | 15 Years Prorata*** (Excludes WA) | 15 Years Prorata*** (Excludes WA) | 15 Years Prorata*** (Excludes WA) | 15 Years Prorata*** (Excludes WA) | 10 Years Prorata*** (All States) |



Sanden International (Australia) Pty. Ltd.
 6/17 Willfox Street, Condell Park, NSW 2200
 PO Box CP296, Condell Park, NSW 2200
 Sales Enquiries: 1800146123 or (02) 9791 0999
 Sales Fax: (02) 9791 6601
 Email: sales@sanden.com.au
 Website: www.sanden-hot-water.com.au



Note: Materials and specifications are subject to change without notice.

***Refer to website for Warranty Terms and Conditions

** Stainless Steel Only

* Calculated using ORER methodology

^ Tested under AS/NZ5125.1:2014 requirements

† Fiscal 2015

Sanden Dealer:

For more information or your nearest Dealer/Installer, please call 1800146123 or visit www.sanden-hot-water.com.au